

MONTHLY MEMBERSHIP PROGRESS REPORT

LOCATION INDIA

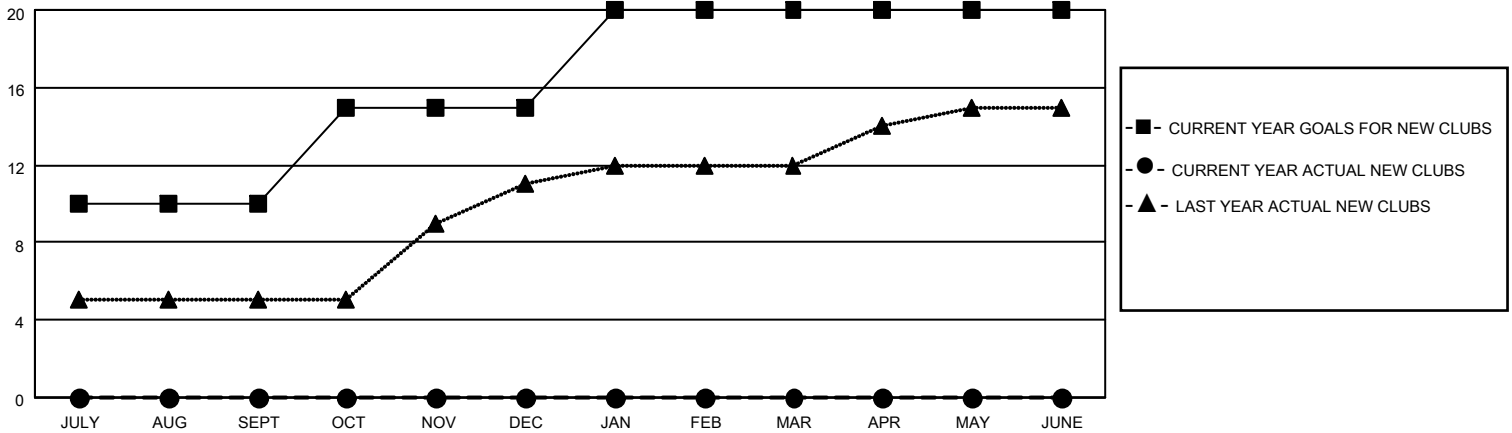
District 3232F1

Results as of: 7/31/2022

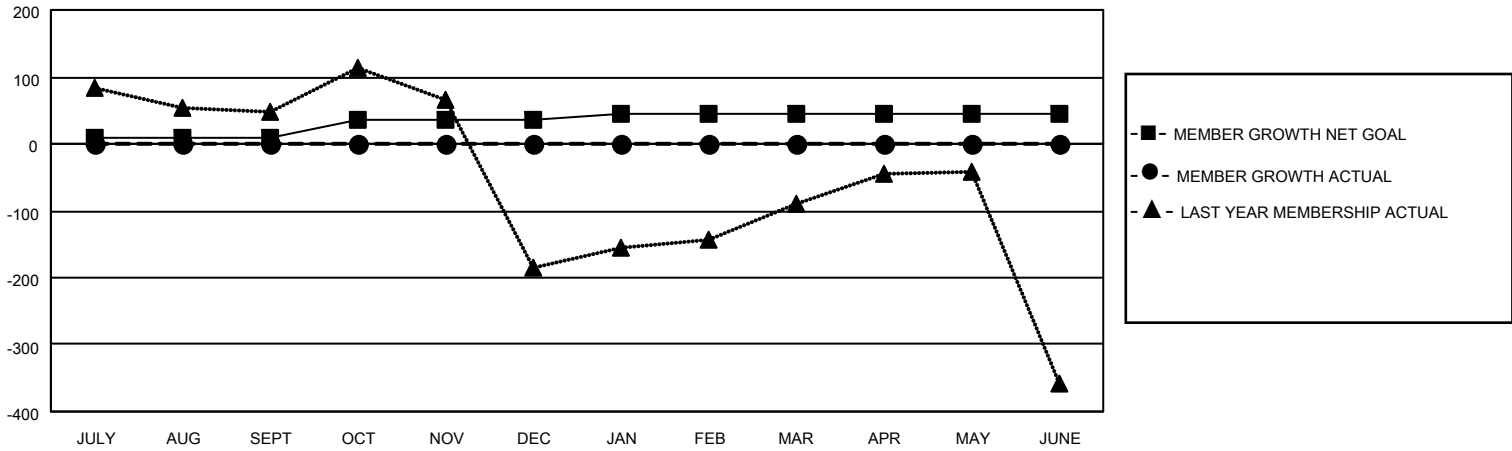
Clubs			
RESULTS FOR 2022-2023			
QUARTER	NEW CLUB GOAL	NEW CLUBS	DROPPED CLUBS
JULY/AUG/SEPT	10	0	0
OCT/NOV/DEC	5	0	0
JAN/FEB/MAR	5	0	0
APR/MAY/JUNE	0	0	0

Members			
RESULTS FOR 2022-2023			
QUARTER	MEMBER GROWTH NET GOAL	MEMBER GROWTH ACTUAL	DROPPED MEMBERS ACTUAL (including transfers)
JULY/AUG/SEPT	10	32	31
OCT/NOV/DEC	25	0	0
JAN/FEB/MAR	10	0	0
APR/MAY/JUNE	0	0	0

GOALS AND ACTUAL NEW CLUBS CUMULATIVE



GOALS AND ACTUAL MEMBERS CUMULATIVE



DROPPED CLUBS: 0	
DROPPED MEMBERS	
DECEASED	1
CLUB CANCELLED	0
OTHER	30
TOTAL	31

10 CLUBS OF 130 ADDED 1 OR MORE NEW MEMBERS

[CLICK HERE FOR CUMULATIVE MEMBERSHIP DATA](#)

<u>GENDER DISTRIBUTION</u>	
MALE	2,380 (60.56%)
FEMALE	1,550 (39.44%)
NON BINARY	0 (0.00%)
PREFER NOT TO ANSWER	0 (0.00%)
TOTAL FAMILY UNIT MEMBERS	2,402
FAMILY MEMBERS PAYING HALF DUES	1,528